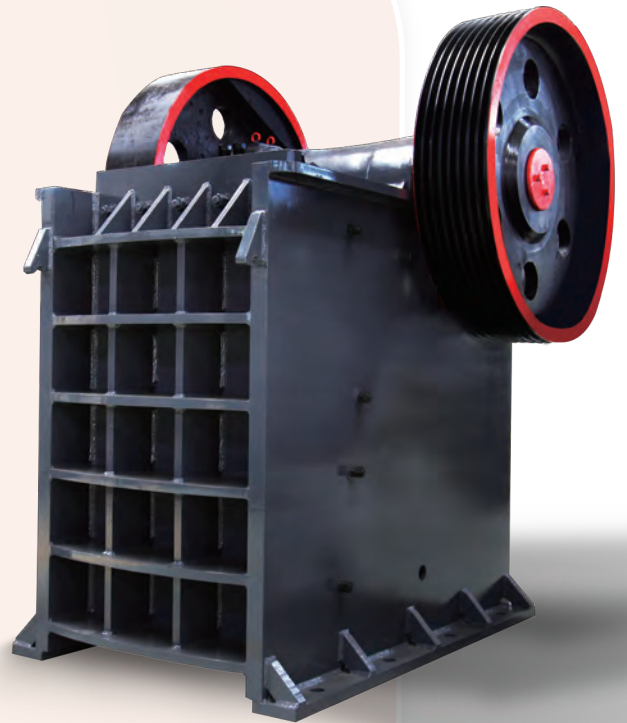


PE
系列
鄂式
破碎机

品质与文明之光闪耀世界!
The light of quality and civilization shines the world!



ISO 9001:2000
Quality System
Certification+CCC



SBM COMPANY
PRODUCTIONS >>>

PE Series Jaw Crusher

SBM  [®]
MINING AND CONSTRUCTION MACHINERY

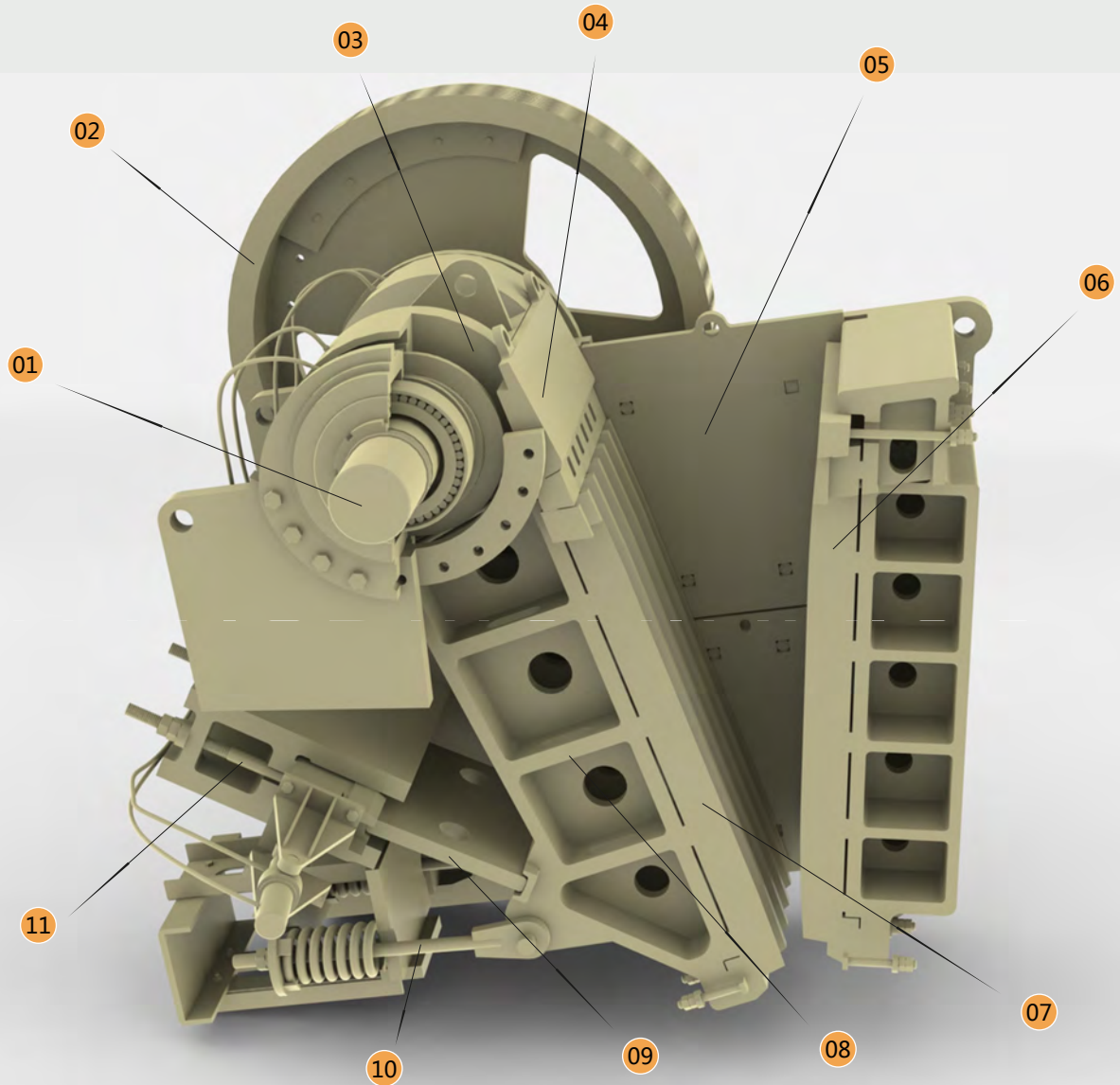


Main Structure

ISO 9001:2000
Quality System
Certification+CCC



SBM COMPANY
PRODUCTIONS >>>



- | | | |
|-----------------------------|-----------------------|------------------------|
| 01 .Eccentric Shaft | 06 .Fixed Jaw Plate | 11 .Adjustment Setting |
| 02 .Sheave | 07 .Moveble Jaw Plate | |
| 03 .Eccentric Shaft Bearing | 08 .Frame | |
| 04 .Guard Plate | 09 .Toggle Plate | |
| 05 .Cheek Plate | 10 .Spring Rod | |

■ 主要特点与优势

Main Features



One of our main products, Jaw Crusher is designed by our engineers. It features large reduction ratio, granularity, simple structure, reliable operation, convenient maintenance, and low cost, Jaw Crusher is widely used in mining, metallurgy, construction, highway, railroad, and chemistry industries.

Based on years' experience and technology improvement, SBM jaw crusher has 9 different models, which can meet most crushing requirements in primary and secondary crushing.

1. Simple structure and easy maintenance.
2. Stable performance and low operating cost.
3. High crushing ratio.
4. Use wear-resistant manganese steel.
5. Resistance to friction, abrasion and compression, leads to longer working life.

SBM PRODUCTS



■ 应用

Application

Jaw crusher has been widely applied in mining, metallurgical, construction, road and railway building, water conservancy and chemistry etc. It is mainly applied in primary crushing, in which the compressive strength of original material is under 320Mpa.

■ 操作与维护

Operation & Maintenance

Jaw Crusher is made up of frame, flywheel, movable plate, fixed plate, toggle plate, set adjustment, main bearing, etc. The toggle plate is used for protection.

1. The jaw crusher should be greased and oiled regularly; this should be done prior to each time of use.
This should be done prior to each time of use. To do this, simply give all grease caps a full turn (clockwise) and put a few squirts of oil in both of the oil cups. If grease caps are tight, add more grease (see MAINTENENCE below).
2. Check jaws for cleanliness and clean them if needed.
Loosen the wing nuts and remove the front shield, then loosen the hopper wing nuts and move it up and back so that the jaw cam lock is exposed. Lift the cam lock up to release the stationary jaw so that it may be lifted straight out. If it is jammed, the cam lock may be freed by tapping lightly with a mallet or ball peen hammer.
3. Adjustment for jaw spacing.
Turn the circuit breaker to the "ON" position. Start the machine and allow it to come up to full speed. Loosen the square-head bolt (left). This will allow the hand knob (or right) to turn. Slowly turn the hand-knob clockwise until the jaws of the crusher can be heard touching each other.
4. When the crushing process is complete, remove the sample collection tray and transfer its contents to a clean container.
5. Before next time of use, clean the crusher and collection tray(s) as described previously.
When done for a day, make sure the lab is cleaner than it was when you started, and the breaker to the crusher is turned off, lights are out, and door is closed and locked.
6. Overheating.
If for some reason the machine jams or stops running, turn the circuit breaker for the machine "OFF" before any inspection. Once the circuit breaker is off, the thermal relay and motor relay will need to be reset. Press the red stop button for the machine and reset the relay for the motor. Wait a few minutes for the motor to cool down. Before turning the breaker switch "ON" to restart the machine, make sure the cause of the stoppage has been alleviated.

技术参数

Technical Data

Model	Max. Feed Size (mm)	Adjustable Range of Discharging Opening(mm)	Feed Opening (mm)	Motor Power (kw)	Capacity (t/h)	Weight (t)
PE-150×250	125	10-40	150×250	5.5	1-5	0.81
PE-250×400	210	20-60	250×400	15	5-20	2.8
PE-400×600	340	40-100	400×600	30	25-65	6.5
PE-500×750	425	50-100	500×750	55	45-80	10.1
PE-600×900	500	65-160	600×900	55-75	70-150	15.5
PE-750×1060	630	80-140	750×1060	110	130-260	28
PE-900×1200	750	95-165	900×1200	110-132	220-500	50
PE-1000×1200	850	195-265	1000×1200	132	250-700	57
PE-1200×1500	1020	150-300	1200×1500	160-220	400-1000	100.9

Note: This specification is just reference, any changes are subject to the products.

工作原理

Working Principle

Jaw crusher machine uses motor as its power. Through the motor's wheels, the eccentric shaft is driven by the triangle belt and slot wheel to make the movable jaw plate move by a regulated track. Therefore, the materials in the crushing cavity, which is composed of fixed jaw plate, movable jaw plate and side-lee board, can be crushed and discharged through the discharging opening.



■ 世邦服务

SERVICE

Since establishment, Shanghai Shibang Machinery Co., Ltd has regarded "All we do is for clients" as its goal and has provided high-quality, high-efficient and all-around-way service for its clients.

1. Pre-sale Services

Act as a good adviser and assistant to clients; enable them to get benefit on their investments.

- Select equipment model
- Design and manufacture products according to clients' special requirement
- Provide technical training program for clients

2. Services During The Sale

Respect clients; devote ourselves to improving the total value of clients.

- Pre-check and products before delivery
- Help clients to make solving plans

3. After-sale Services

Provide considerate services to minimize clients' worries.

- Assist clients to prepare for the first construction scheme
- Install and debug the equipment
- Train the first-line operators on site
- Examine the equipment regularly
- Provide maintenance for large machine elements
- Provide technical exchange opportunity
- Provide perfect service
- Deliver door-to-door guarantee service
- Rapidly eliminate client's troubles at site



上海世邦机器有限公司
Shanghai Shibang Machinery Co., Ltd.

中国上海浦东新区建业路416号
No.416 Jianye Road,
Pudong New District, Shanghai, China.
Postcode: 201201

技术数据仅供参考，
如有变动，恕不另行通知
Any change of technical data
shall not be advised additionally.

更多内容请访问
www.sbmchina.com

SBM head office(24 hours):

Tel: 0086-21-58386189
0086-21-58386176
Fax: 0086-21-58386211
E-mail: sbm@sbmchina.com



奔腾和谐的世邦
Energetic and Harmonious SHIBANG