



HPC220 多缸液压圆锥破碎机

HPC220 Cone Crusher With High-efficiency

中国上海浦东金桥南区建业路416号
No.416 Jianye Road, South Jinqiao Area, Pudong
New District, Shanghai, China

邮编 (Postcode): 201201

国际市场部: International Trade Department

Tel: 0086-021-58386176
0086-021-58386189

Fax: 0086-021-58386211

Email: sbm@sbmchina.com

Web: www.sbmchina.com

国内市场部:

Tel: 400-696-1899 (24小时销售热线)

021-58386699

Fax: 021-58385681

Web: www.shibangchina.com

品质与文明之光闪耀世界
The light of quality and civilization
shines the world

HPC220 多缸液压圆锥破碎机

Cone Crusher With High-efficiency

品质与文明之光永远闪耀世界！
The light of quality and civilization shines the world!



HPC220 多缸液压圆锥破碎机

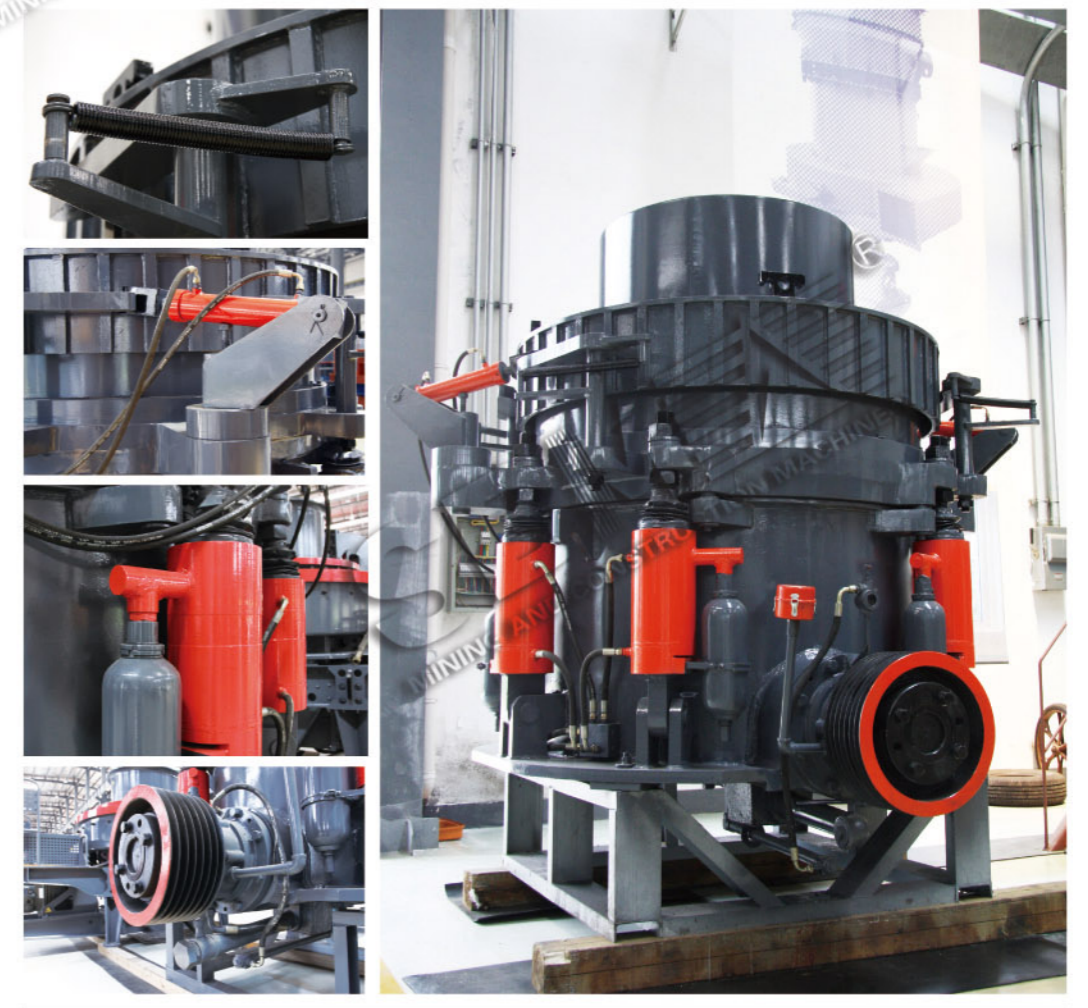
PRODUCT OVERVIEW / 产品概述

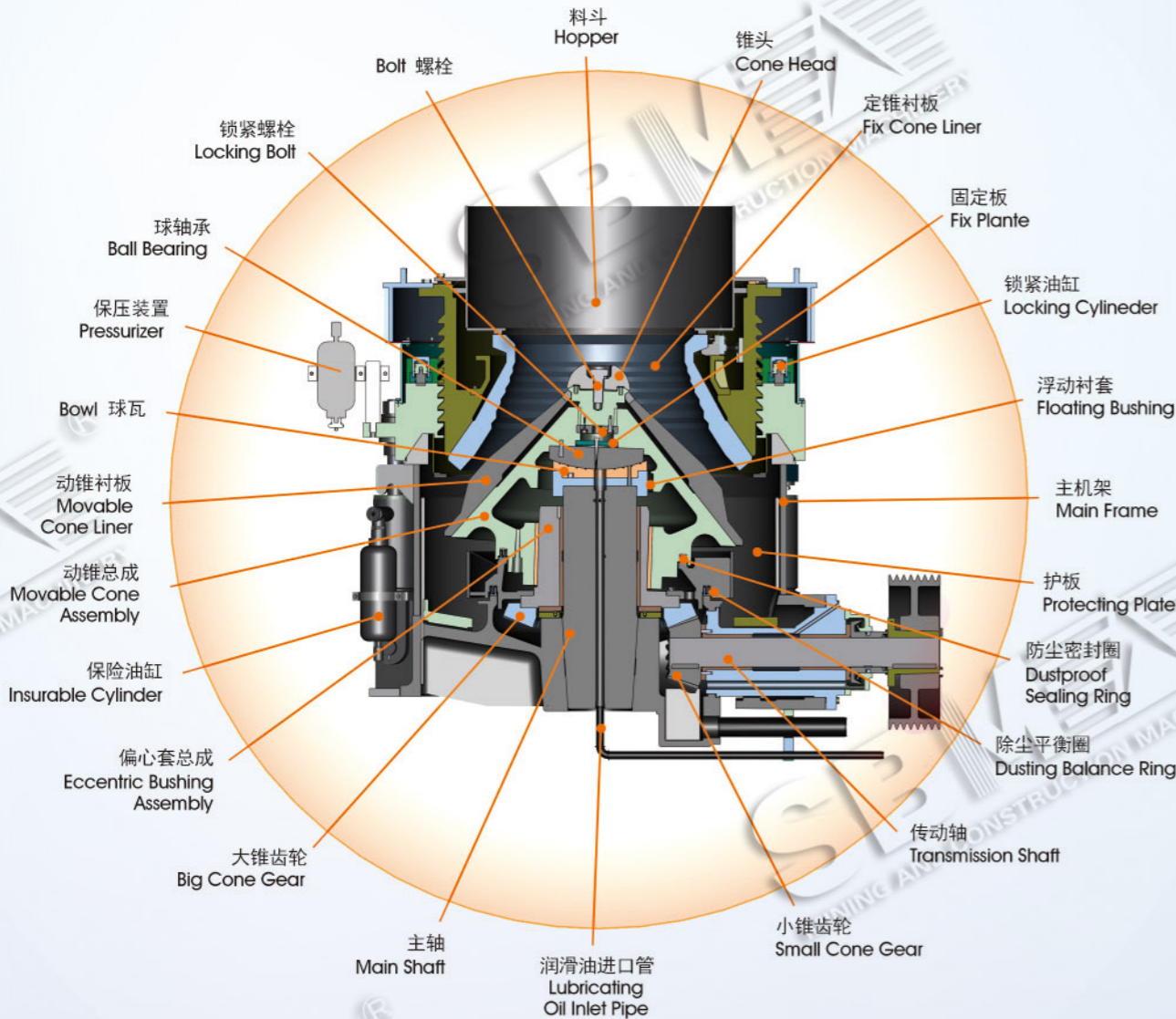
HPC220多缸液压圆锥破碎机能够可靠、高效且平稳地破碎物料，是大型石料厂和矿业破碎的理想设备。

HPC220多缸液压圆锥破碎机采用了独特的摩擦盘和偏心轴套绕定轴旋转的专利技术，显著地提高了破碎比、产量及成品料立方体的含量，使破碎产品的质量更加优秀。另外它还具有机动性好、易实现破碎流程的自动化等优点。

HPC220 multi-cylinder hydraulic cone crusher is an ideal equipment for large-scale stone factory and mining crusher because reliable, high-efficiency, and stable materials crushing performance.

HPC220 multi-cylinder hydraulic cone crusher adopts patent technology that circulating friction disc and eccentric bushing around fixed axle, via which improve crushing ratio, protection capacity, content of finished product materials, and quality of crushing product. In addition, as well as provide the unit with feature of better mobility and crushing flow automatization.

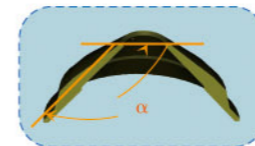




HPC220 多缸液压圆锥破碎机

FEATURE AND ADVANTAGE / 设备特点及优势

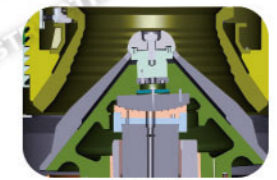
- ★ 1、大夹角、大偏心和高转速的设计。HPC220破碎机的动锥采用了大夹角、大偏心和高转速的设计，让其在动锥直径相同的情况下额定功率和通过能力大大提高，使破碎比和生产效率更高。
1. Design of high inclination, high eccentricity and high speed. Movable cone of HPC220 crusher adopts design of high inclination, high eccentricity and high speed, which shall improve rated power and passing capacity significantly under condition of same fixed cone diameter, as a result, provide higher crushing ratio and production efficiency.
- ★ 2、高锰钢材质、料层保护。HPC220破碎机的破碎壁、轧臼壁采用了高锰钢材质且由于破碎腔型的改变和层压破碎时的料层保护，使易损件消耗少、运行成本大大降低。
2. High manganese steel materials and materials bed protection. Via adopting rushing wall, rolled mortar wall crusher that made of high manganese steel materials, as well as modifying model of crushing cavity and providing materials bed protection during between-layer pressuring crushing process, HPC 220 crusher may realize less spare part consumption and lower operation cost.
- ★ 3、层压破碎、匹配的转速和腔型。通过采用颗粒间的层压破碎原理设计的特殊腔型和相应的转速，实现了对物料选择性的颗粒间破碎，显著提高了产品细颗粒和立方体的含量。
3. Between-layer pressuring crushing, suitable speed and cavity shape. Via adopting special cavity shape that designed in between-layer pressuring crushing principle and suitable speed, the unit may crush materials selectively, and improve proportion of fine product and cubic shape distinctly.
- ★ 4、液压自动清腔、过载保护。液压调节排料口、液压过载保护和液压自动清腔使圆锥破碎机运行水平提高，使维修更简单、操作更方便、停机时间更短。
4. Hydraulic cavity clearing and overload protection. Hydraulic-adjusting discharging port, hydraulic overload protection and hydraulic cavity clearing may improve operating performance of cone crusher, as well as simplify maintenance, operation, and shorten repairing time.



HPC220多缸液压圆锥破碎机的动锥
Movable cone of HPC220 multi-cylinder hydraulic cone crusher



高锰钢材质的定锥
High manganese steel fixed cone



圆锥破碎腔
Cone crushing cavity



过铁时液压缸工作
Hydraulic cylinder operates during iron passing process

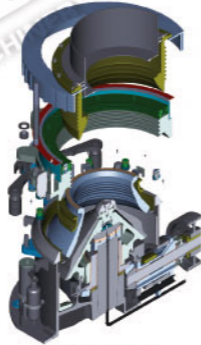
HPC220 多缸液压圆锥破碎机

TECHNICAL PARAMETER / 技术参数

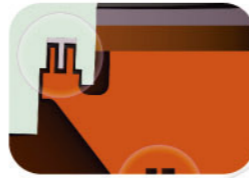
- ★ 5、稀油集中润滑系统、多点及时润滑。及时带走摩擦热和机械杂质，达到润滑良好、减轻摩擦、降低磨损和减少易损件的消耗、减少功率消耗、延长设备使用寿命的目的。
 - ★ 6、顶部或侧面拆装，维护快捷方便。
HPC220圆锥破碎机所有零件都可以从顶部或侧面拆装和维护，动锥和定锥拆装方便，无需拆装机架、紧固螺栓，使日常更换衬板更便捷。
 - ★ 7、非接触式迷宫密封。
高性能的非接触式迷宫密封件无磨损，提高了阻挡粉尘的可靠性，消除了弹簧圆锥破油水混合等常见故障。
-
- ★ 5. Centralized oil lubricating system and multi-position opportune lubrication may carry off friction heat and mechanical impurity in time, and realize purpose of improving lubrication, lightening friction, depressing abrasion and consumption of wearing parts, reducing power consumption and prolonging service life of equipment.
 - ★ 6. Disassembly and assembly that completed from top or side part bring simple maintenance. Including the fixed cone and movable cone, all parts of HPC220 cone crusher can be assembled, disassembled and repaired from the top and side part without disassembling the crusher body and fasten the bolts.
 - ★ 7. Untouchable labyrinth airproof design. High performance and untouchable labyrinth airproof element blocks off dust, and protect spring cone crusher from mixture of oil and water.



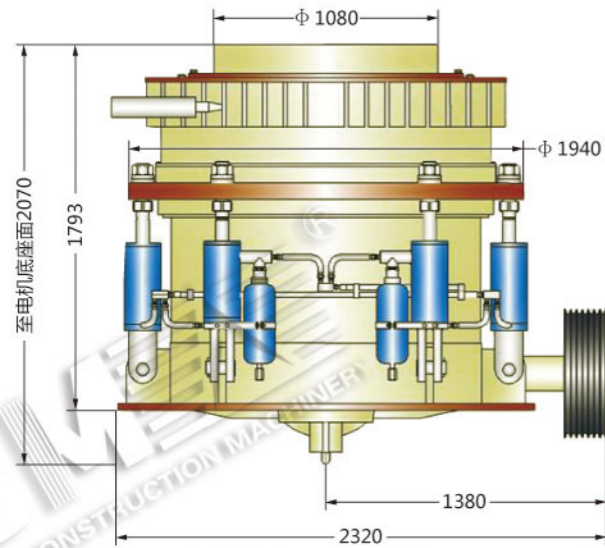
稀油润滑站
Thin oil lubricating station



维修时拆装方向
Disassembling direction for maintenance



非接触式迷宫密封件
Untouchable labyrinth airproof element



★ 主机主要技术参数 / Major technical parameter of main frame

主机部分 Main frame	给料口宽度 / Width of feeding port (mm)	215、140
	推荐最大给料尺寸 / Recommended max. feeding dimension (mm)	160、90
	功率 / Power (kw)	220
	允许最大过铁尺寸 / Allowable max. iron passing dimension (mm)	< 40
	外形尺寸长×宽×高(mm) / External dimension L×W×H (mm)	2320x2000x2070
润滑系统 Lubricating system	油箱容积 / Oil tank volume (L)	1200
	额定压力 / Rated pressure (Mpa)	0.4
	流量 / Flow (L/min)	≥100
	系统总功率 / Total power of system (kw)	16
	冷却功率 / Cooling power (p)	10
	电加热器电压 / Electric heater voltage (V)	220

★ 生产能力 / Production capacity

腔型 / Cavity model	参数项 / Parameter item	排料口调整范围 / Adjustable range of discharging port (mm)	产量 / Capacity (th)
A型破碎腔 / Model A crushing cavity		30-60	150-300
B型破碎腔 / Model B crushing cavity		20-30	70-150

★ 液压系统技术参数 / Technical parameter of hydraulic system

液压系统 Hydraulic system	油箱容积 / Oil tank volume (L)	200
	工作压力 (Mpa) / Operating pressure (Mpa)	16
	介质 / Medium	HM46抗磨液压油 / HM46 antiwear hydraulic oil
	电机功率 / Motor power (kW)	10

注：生产能力受多种因素的影响，如原料的硬度、湿度、进料的级配、排料口大小、操作方法等，给出的破碎能力是当地的石料数据。
Note: The Crushing Capacity belongs to local stone data only because protection capacity may be impacted by various factors, for example: rigidity, humidity, graduation of feeding materials, dimension of discharging port and operating method etc.